

OASIS TR 08 SERIES LED TRACK SPOTLIGHT

MODEL: OS TR 208



powered by

TRIDONIC



Black Texture



White Texture



White Texture & Black Ring



TRIDONIC LED COB

Specifications & Technical Data

Luminaires:

- Polycarbonate Ring
- Die Cast Aluminium Body
- Electrostatically Polyester Powder Coated
- Polycarbonate Gear Box & Track Adaptor
- Adjustable Lamp Position
- Track Mounted (OS Track 11 / 12 / 13)

Areas of Application:

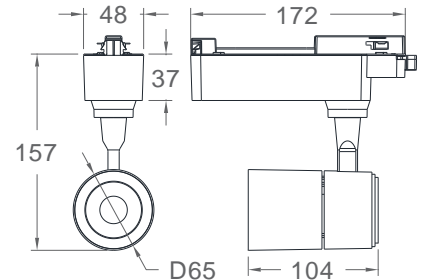
- Home, Hospitality, Hotels, Retail,
- Supermarkets, Restaurants,
- Shop Lighting, Museums, Galleries
- Public & Commercial Building

CCT (K):

- 3000K
- 4000K

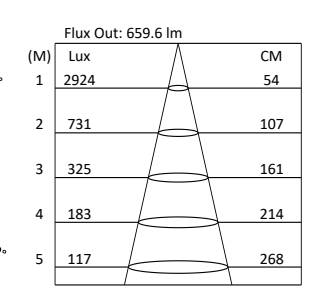
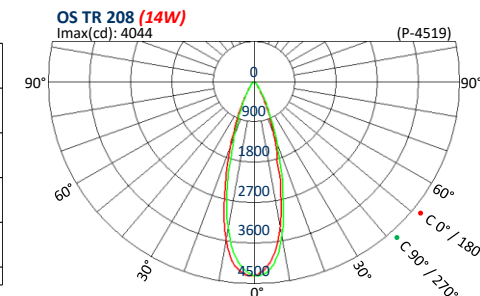
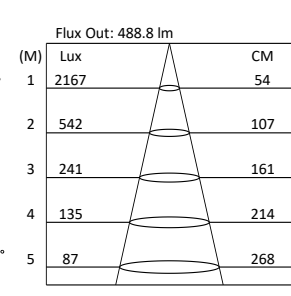
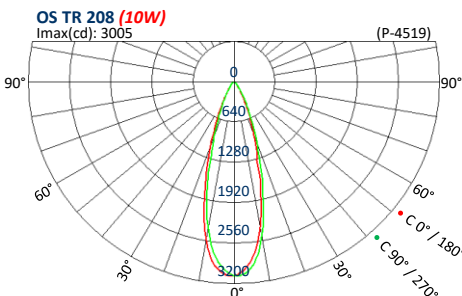
Colour:

- Black Texture
- White Texture
- White Texture & Black Ring



Model	System Lumens (lm)	System Power (W)	System Current (A)	Beam Angle (°)	TRIDONIC Module (50Khrs) SLE G7 ADV (DC)	TRIDONIC LED Driver (50Khrs) (AC 220-240V, 50/60Hz, PF 0.90)
OS TR 208	1100lm	10W	0.05A	30°	SLE G7 09mm 1200lm 8xx R ADV <i>(250mA)</i>	LC 10/250/42 fixC SC ADV2 <i>or</i> LC 10/150-250/42 flexC SC SNC4
	1500lm	14W	0.06A	30°	SLE G7 09mm 1200lm 8xx R ADV <i>(350mA)</i>	LC 15/350/42 fixC SC ADV2 <i>or</i> LC 17/250-400/42 flexC SC SNC4

Photometric Data



TRIDONIC SLE G7 09mm 1200lm 840 R ADV
Total Flux (lm): 1178.9
Beam 31.9° (50%)

TRIDONIC SLE G7 09mm 1200lm 840 R ADV
Total Flux (lm): 1582.9
Beam 31.7° (50%)

Date: 19 August 2024